



**Shaw
& Co**
ESTATE
AGENTS

GUIDE PRICE

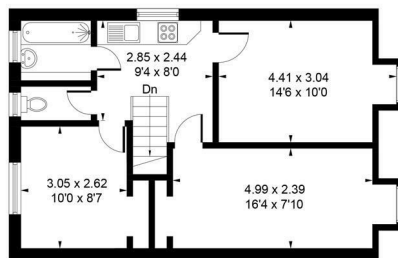
£2,500,000

Oxford Road

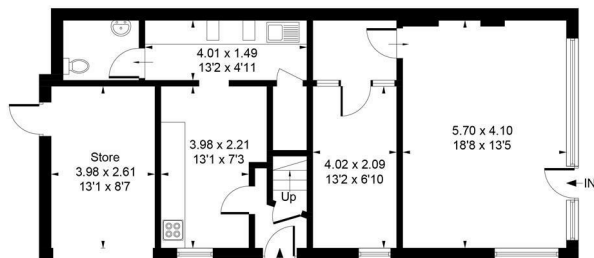
Denham, SL9 7BB



Approximate Gross Internal Area = 124.90 sq m / 1344 sq ft
(Including Store)

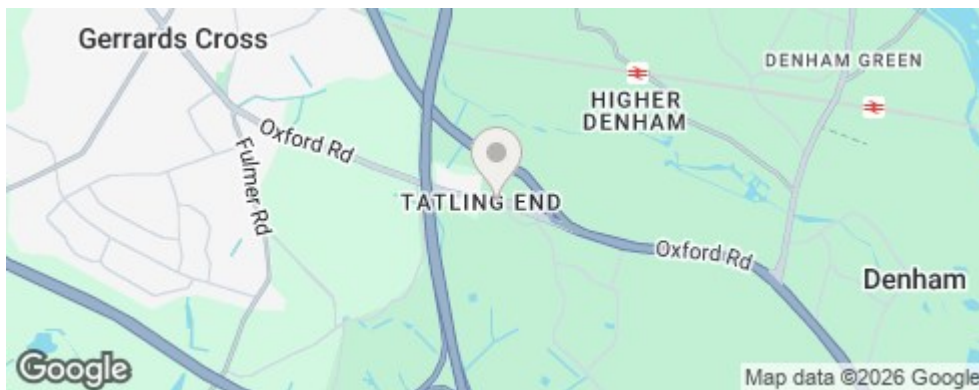


First Floor



Ground Floor

Whilst every attempt has been made to ensure the accuracy of the floor plan contained here, measurements of doors, windows, rooms and any other items are approximate and no responsibility is taken for any error, omission, or mis-statement. This plan is for illustrative purposes only and should be used as such by any prospective purchase.
© Vizion Property Marketing Produced for Shaw & Co.



Energy Efficiency Rating

	Current	Potential
Very energy efficient - lower running costs		
(92 plus) A		
(81-91) B		
(69-80) C		
(55-68) D		
(39-54) E		
(21-38) F		
(1-20) G		
Not energy efficient - higher running costs		
England & Wales		
EU Directive 2002/91/EC		



Agents Note: Whilst every care has been taken to prepare these particulars, they are for guidance purposes only. All measurements are approximate and are for general guidance purposes only and whilst every care has been taken to ensure their accuracy, they should not be relied upon and potential buyers/tenants are advised to recheck the measurements

**Shaw
& Co**
ESTATE
AGENTS

OFFICE ADDRESS
10 Central Parade
New Heston Road
Heston
Middlesex
TW5 0LH

OFFICE DETAILS
0208 570 7258
heston@shawandcoestates.com